



INSTALLATION MANUAL
TILTING WINCH MOUNT FULL GUARD FRONT
PRODUCT NUMBER: KC20-N3750
APPLICATION: 2020 CHEVROLET KODIAK
4500-6500



IMPORTANT SAFETY GUIDE | Your safety and the safety of others is very important.

In order to help you make informed decisions about safety, we have provided the following warnings, safety precautions, installation instructions, and other important information to alert you to potential hazards that could hurt you or others.

Please do a job safety analysis before each task to identify potential hazards for your situation and remove/protect against them. Use own good judgment and take your time.

Check packaged materials immediately upon arrival to ensure that all listed parts are included and undamaged.

Read and understand all warnings, safety precautions, and instructions before installing this product.

SENSORS FIELD OF VIEW MAY BE ALTERED WITH USE OF THE REPLACEMENT BUMPER.

WARNINGS

- Failure to observe the following warnings and instructions provided in this manual could lead to severe injury and/or death.
- For professional installation only. Careless installation and/or operation can result in serious injury, death, and/or equipment damage. All liability for installation and use rests with the user or consumer.
- Fab Fours, Inc. only approves installing this product according to these written instructions with the hardware provided. Failure to install according to these instructions will invalidate the warranty. This includes, but is not limited to, using alternative installation methods, hardware, or materials.
- This product is for off road use only.

SAFETY PRECAUTIONS

- Always remove jewelry and wear eye protection.
- Always use extreme caution when jacking up a vehicle for work. Set emergency brake and use tire blocks. Locate and use the vehicle manufacturers designated lifting points. Use jack stands.
- Always use appropriate and adequate care in lifting components into place.
- Always ensure components will remain secure during installation and operation.
- Always wear safety glasses when installing this kit. A drilling operation will cause flying metal chips. Flying chips can cause serious eye injury.
- Always use extreme caution when drilling a vehicle. Always disconnect power before welding. Thoroughly inspect the area to be drilled (on both sides of material when possible) prior to drilling, and relocate any objects that may be damaged.
- Always use extreme caution when welding a vehicle. Thoroughly inspect the area to be welded (on both sides of material when possible) prior to welding, and relocate any objects that may be a fire hazard. When welding in a cab, make sure the interior surfaces are covered (e.g., welding blanket) and a fire extinguisher is at hand.
- Always use extreme caution when cutting and trimming during fitting.
- Always tighten all nuts and bolts securely per installation instructions.
- Always route electrical cables carefully. Avoid moving parts, components that become hot, and rough or sharp edges.
- Always insulate and protect all exposed wiring and electrical terminals.
- Perform regular inspections and maintenance on mounts and hardware.

TABLE OF CONTENTS

2	SAFETY / DISCLAIMER
3	TABLE OF CONTENTS
4	A MESSAGE FROM THE OWNER
5	GETTING STARTED
6	PROVIDED MATERIAL
7	INSTALLATION
12	CONTACT

A MESSAGE FROM THE OWNER



Fab Fours' was born out of a passion for customizing vehicles and a love of the outdoors. Our engineering team uses the latest 3D design software to turn new product ideas into reality. In our factory, designs come to life with the combination of cutting edge technology for metal cutting and forming and an American workforce that puts its' heart and pride into every product.

From design and manufacturing, to quality and delivery, Fab Fours' mission is to be the market leader for steel truck and jeep accessories. We make sure a quality product is delivered on time, more than expected, better than expected to our customers.

Enjoy your new Fab Fours product. Welcome to the family!

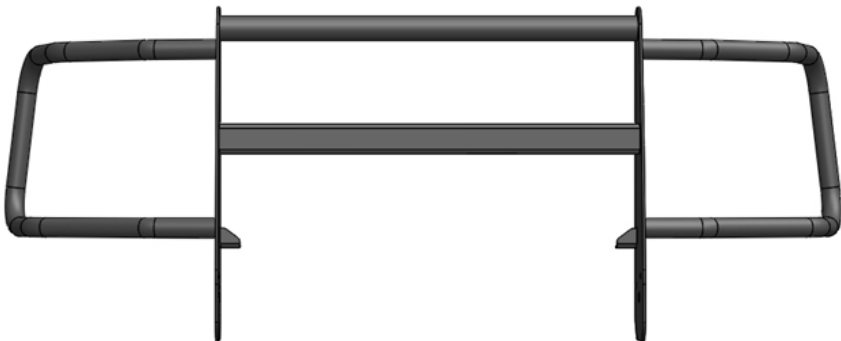
Greg Higgs

FOUNDER, FAB FOURS

GETTING STARTED

Before you begin the installation process of your new Fab Fours product, we suggest laying out all materials and parts on a pad or protective surface.

Failure to fully account for all components before beginning installation may leave vehicle immobile until part is acquired. Refer to the next pages as an inventory check.



PROVIDED MATERIALS



N3750- IM



50260-HW



22368



22369



61780 x2



61782 x2

HARDWARE KIT | 50260

FAB FOURS IDENTIFICATION	COMPONENT DESCRIPTION	QTY
50260-HW	1/2" THRUST BEARING WASHER	4
50260-HW	1" SHORT NYLON SLEEVE BEARING	2
50260-HW	1" LONG NYLON SLEEVE BEARINGS	2
50260-HW	1" YELLOW ZINC HEX HEAD BOLT, GRADE 8	2
50260-HW	1" YELLOW ZINC FLAT WASHER, GRADE 8	4
50260-HW	1" YELLOW ZINC NYLOCK LOCK NUT, GRADE 8	2
50260-HW	1/2"-13 YELLOW ZINC HEX HEAD BOLT, GRADE 8	6
50260-HW	1/2" YELLOW ZINC FLAT WASHERS, GRADE 8	16
50260-HW	1/2"-13 YELLOW ZINC NYLOCK LOCK NUT, GRADE 8	8
50260-HW	1/2"-13 YELLOW ZINC HEX NUT, GRADE 8	2
50260-HW	M8 Lock Was 1/2" YELLOW ZINC LOCK WASHER,	2

TOOLS REQUIRED

- 3/4" Wrench & socket
- 1 1/2" Wrench & socket
- 18mm Socket

ASSISTANCE

We recommend two people perform the installation as items are heavy and may need to be held in place while installing.

ORGANIZATION

Disassemble the vehicle where you can catalog and store everything. We suggest labeling and bagging all the OEM bolts when removing from the vehicle. Failure to keep track of parts could lead to an inability to properly reinstall components.

INSTALLATION

NOTE: Save all OEM parts until installation is complete!

NOTE: Figure 1 shows an exploded view of the assembled winch tray with all its components. Follow the provided steps below to complete the assembly process. (Figure 1)

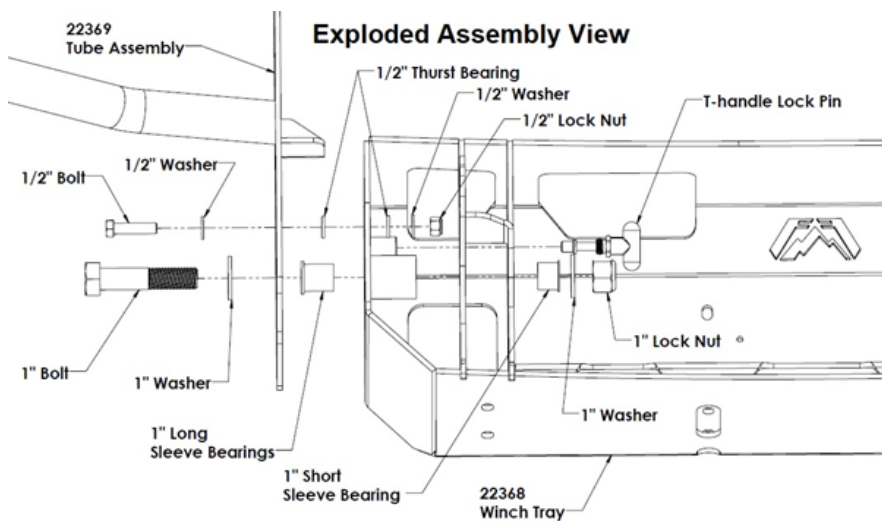


Figure 1

1. Install the T-handle locking pins (61780) into the winch tray (22368) by threading it into both the left and right sides. (Figure 2)



Figure 2

2. Press the long nylon sleeve bearing into the pivot cup from the outside of the bumper. Press the short nylon sleeve bearing in the same way from the inside of the bumper. (Figure 3)



Figure 3



3. If truck is equipped with tow hooks: Removed the tow hooks from the truck using an 18mm socket. Attach the tow hooks to the bottom of the winch tray using four (4) of the provided 1/2"-13 yellow zinc bolts, flat washers and lock nuts (50264-HW). (Figure 4)

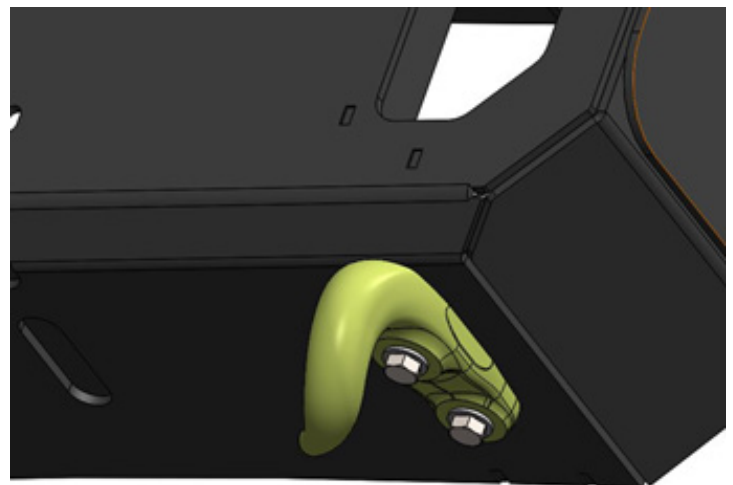


Figure 4

4. Use a 24mm socket wrench to remove the three (3) bolts holding the OEM bumper to the frame. NOTE: the bumper will be loose at this point but should stay on the frame. (Figure 5)

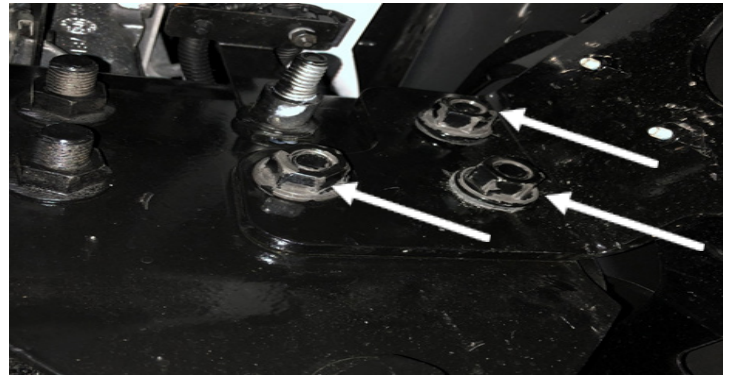


Figure 5

5. With assistance, hold the winch tray up to the truck and use the OEM bolts removed during step 5 to install the winch tray to the frame. (Figure 6)



Figure 6

6. Use two of the provided 1/2" x 2" yellow zinc bolts with flat and lock washers and hex nut to bolt the lower mounting face through the tow hook holes (50260-HW). (Figure 7)

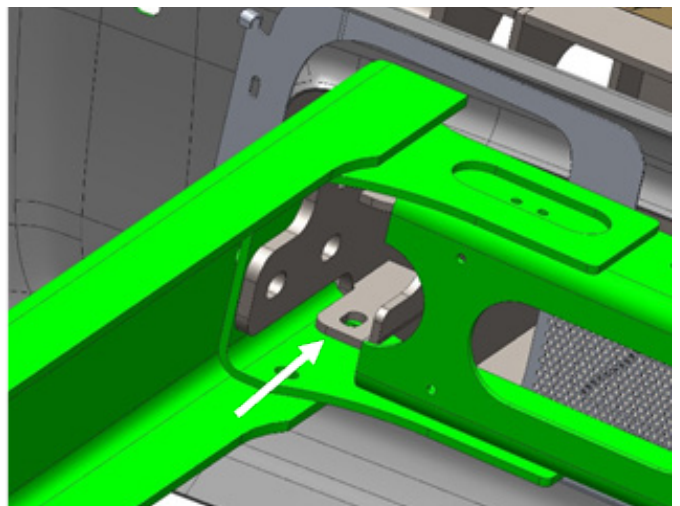


Figure 7

7. With assistance, place the tube assembly on the winch tray and by lining up the pivot cup to the outer hole and installing the 1" yellow zinc bolt with washers and lock nut to fasten it in place. Use a 1 ½" wrench and socket to tighten the 1" bolt to 40lbs. (Figure 7)

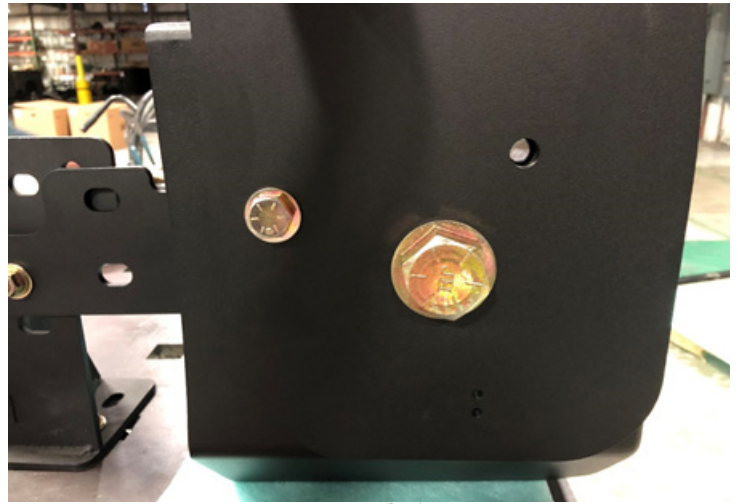


Figure 7

8. Install the 1/2" yellow zinc pivot limiting bolt along with the flat washers, thrust bearing and lock nuts. NOTE: place one of the thrust bearings between the tube assembly and the winch tray and one thrust bearings on the inside of the winch tray. Use a ¾" wrench and socket to tighten the bolt to 10-15lbs. (Figure 8)



Figure 8

9. Install the provided rubber bump stops underneath the tube assembly stopped plate by removing the adhesive backing and placing it on the winch tray. (Figure 9)

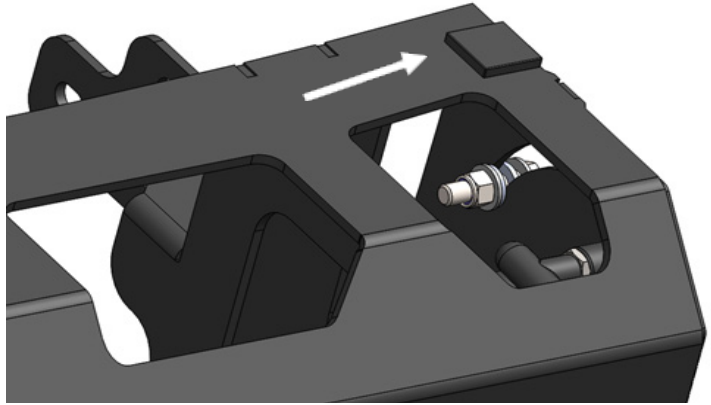


Figure 9

10. Fully tighten the winch tray mounting hardware.

11. Test the pivoting action of the tube assembly. Tighten or loose the 1" and 1/2" bolts until the tube assembly pivots smoothly and in a controlled sweep.

12. Lift the tube assembly up and use the locking pins to secure it in place. Release the locking pins to pivot the tube down when accessing the engine bay.

CONTACT INFORMATION

**FAB FOURS INC.
2213 INDUSTRIAL PARK ROAD
LANCASTER, SC 29720**

**PHONE: (866) 385-1905
FAX: 866-574-1423
EMAIL: SUPPORT@FABFOURS.COM
WWW.FABFOURS.COM**



**“IF YOU’RE LOOKING FOR MORE OF THE SAME,
THEN YOU’VE COME TO THE WRONG PLACE.”**

- GREG HIGGS

