



INSTALLATION MANUAL
ACC HOUSING
PRODUCT NUMBER: M6150
APPLICATION: 2017+ FORD SD



IMPORTANT SAFETY GUIDE | Your safety and the safety of others is very important.

In order to help you make informed decisions about safety, we have provided the following warnings, safety precautions, installation instructions, and other important information to alert you to potential hazards that could hurt you or others.

Please do a job safety analysis before each task to identify potential hazards for your situation and remove/protect against them. Use own good judgment and take your time.

Check packaged materials immediately upon arrival to ensure that all listed parts are included and undamaged.

Read and understand all warnings, safety precautions, and instructions before installing this product.

SENSORS FIELD OF VIEW MAY BE ALTERED WITH USE OF THE REPLACEMENT BUMPER.

WARNINGS

- Failure to observe the following warnings and instructions provided in this manual could lead to severe injury and/or death.
- For professional installation only. Careless installation and/or operation can result in serious injury, death, and/or equipment damage. All liability for installation and use rests with the user or consumer.
- Fab Fours, Inc. only approves installing this product according to these written instructions with the hardware provided. Failure to install according to these instructions will invalidate the warranty. This includes, but is not limited to, using alternative installation methods, hardware, or materials.
- This product is for off road use only.

SAFETY PRECAUTIONS

- Always remove jewelry and wear eye protection.
- Always use extreme caution when jacking up a vehicle for work. Set emergency brake and use tire blocks. Locate and use the vehicle manufacturers designated lifting points. Use jack stands.
- Always use appropriate and adequate care in lifting components into place.
- Always ensure components will remain secure during installation and operation.
- Always wear safety glasses when installing this kit. A drilling operation will cause flying metal chips. Flying chips can cause serious eye injury.
- Always use extreme caution when drilling a vehicle. Always disconnect power before welding. Thoroughly inspect the area to be drilled (on both sides of material when possible) prior to drilling, and relocate any objects that may be damaged.
- Always use extreme caution when welding a vehicle. Thoroughly inspect the area to be welded (on both sides of material when possible) prior to welding, and relocate any objects that may be a fire hazard. When welding in a cab, make sure the interior surfaces are covered (e.g., welding blanket) and a fire extinguisher is at hand.
- Always use extreme caution when cutting and trimming during fitting.
- Always tighten all nuts and bolts securely per installation instructions.
- Always route electrical cables carefully. Avoid moving parts, components that become hot, and rough or sharp edges.
- Always insulate and protect all exposed wiring and electrical terminals.
- Perform regular inspections and maintenance on mounts and hardware.



TABLE OF CONTENTS

- 2 SAFETY / DISCLAIMER
- 3 TABLE OF CONTENTS
- 4 A MESSAGE FROM THE OWNER
- 5 GETTING STARTED
- 6 PROVIDED MATERIAL
- 7 ASSEMBLY
- 9 CONTACT

A MESSAGE FROM THE OWNER



Fab Fours' was born out of a passion for customizing vehicles and a love of the outdoors. Our engineering team uses the latest 3D design software to turn new product ideas into reality. In our factory, designs come to life with the combination of cutting edge technology for metal cutting and forming and an American workforce that puts its' heart and pride into every product.

From design and manufacturing, to quality and delivery, Fab Fours' mission is to be the market leader for steel truck and jeep accessories. We make sure a quality product is delivered on time, more than expected, better than expected to our customers.

Enjoy your new Fab Fours product. Welcome to the family!

Greg Higgs

Founder, Fab Fours

GETTING STARTED

Before you begin the installation process of your new Fab Fours product, we suggest laying out all materials and parts on a pad or protective surface.

Failure to fully account for all components before beginning installation may leave vehicle immobile until part is acquired. Refer to the next pages as an inventory check.

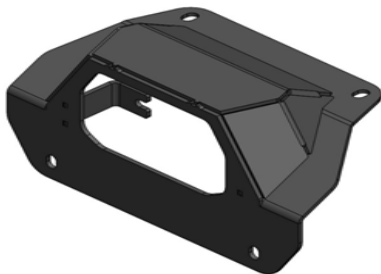


PROVIDED MATERIALS



M6150-IM

50244-HW



22338



22339



61745

HARDWARE KIT | 50244

FAB FOURS IDENTIFICATION	COMPONENT DESCRIPTION	QTY
50244-HW	1/4" NYLOCK HEX NUT, STAINLESS STEEL	2
50244-HW	1/4" FLAT WASHER, STAINLESS STEEL	4
50244-HW	1/4"-20 X 1.25" BUTTON HEAD	2
50244-HW	M6 NYLOCK HEX NUT	1
50244-HW	M6 FLAT WASHER	1
50244-HW	M8 NYLOCK HEX NUT	2
50244-HW	M8 FLAT WASHER 7/16"-14, Yellow Zinc	2

TOOLS REQUIRED

- Plastic panel pry tool
- 7mm Socket wrench
- 13mm Socket wrench
- 18mm socket wrench
- 15mm socket wrench
- 3/32 Allenw wrench
- 11/32 Socket wrench
- 11/16 Socket wrench
- Flat head screw driver
- 5/8 Socket wrench

ASSISTANCE

We recommend two people perform the installation as items are heavy and may need to be held in place while installing.

ORGANIZATION

Disassemble the vehicle where you can catalog and store everything. We suggest labeling and bagging all the OEM bolts when removing from the vehicle. Failure to keep track of parts could lead to an inability to properly reinstall components.

ASSEMBLY

1. Note the type of Adaptive Cruise Control (ACC) sensor you have: Figure 1 shows a large ACC sensor and Figure 2 shows a smaller sensor. (Figure 1-2)

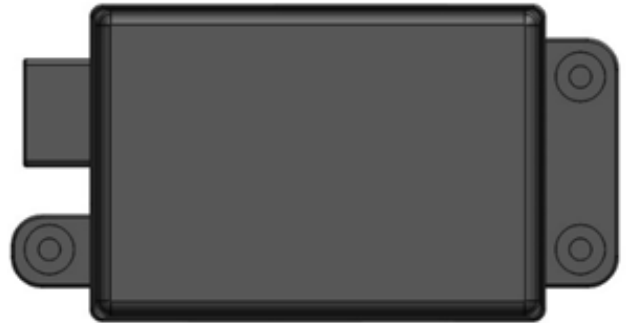


Figure 1

2. If installing the larger sensor discard the bolt on bracket (22339). If using the smaller sensor skip to step 4.

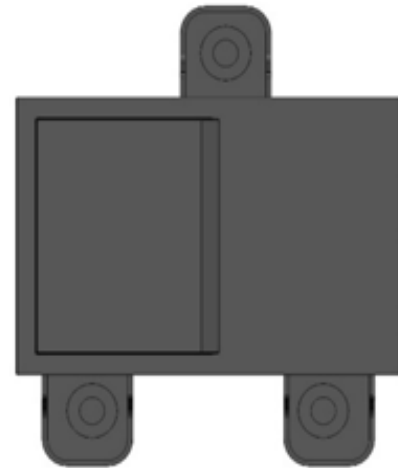


Figure 2

3. Install the large sensor by placing the sensor into the bracket and screwing in the top bolt into the weld-nut. Use the provided M8 hardware to fasten the lower two bolts (50244-HW). NOTE: Once the lower two bolts are secure make sure the sensor is parallel to the front face by adjusting the upper bolt in the weld-nut. (Figure 3)

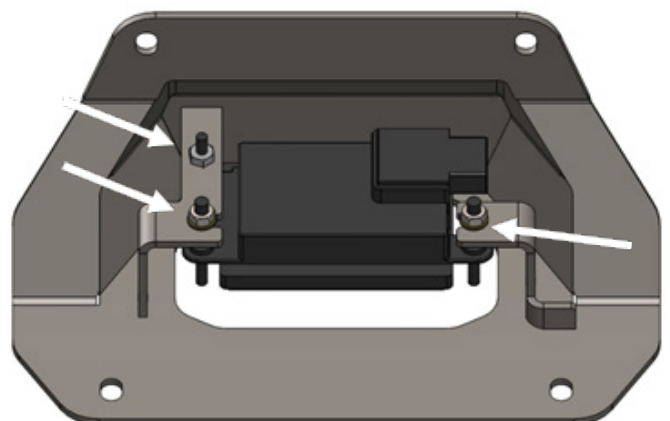


Figure 3

4. Install the small sensor by placing the sensor into the bolt on bracket (22339) and screwing in the top bolt into the weld-nut. Use the provided M8 hardware to fasten the lower two bolts (50244-HW). NOTE: Once the lower two bolts are secure make sure the sensor is parallel to the front face by adjusting the upper bolt in the weld-nut. (Figure 4)

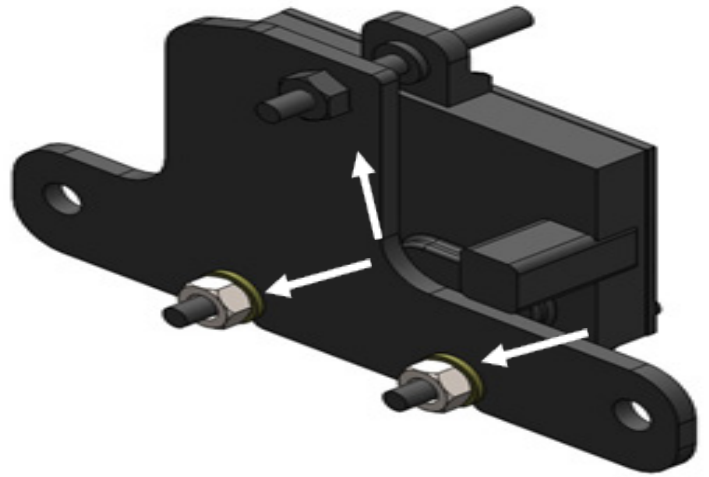


Figure 4

5. Install the bracket (22339) with sensor into the main bracket (22338) using the provided 1/4" hardware (50244-HW). (Figure 5)

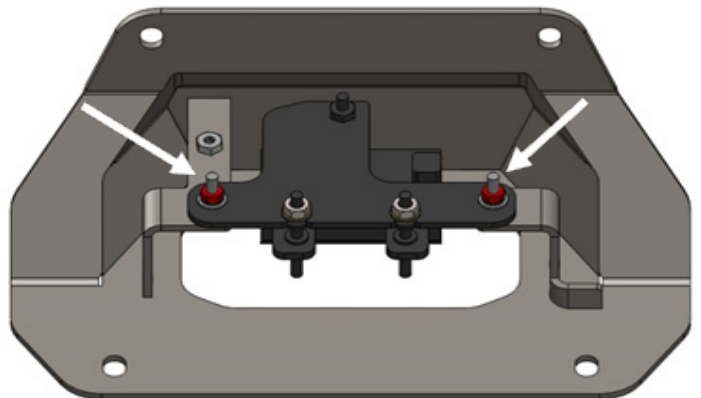


Figure 5

6. Attach the fully assembled sensor bracket onto the bumper using the 7/16" used to attach the logo plate. Plug the sensor into the harness and attach the provided Fab Fours Logo badge to cover the sensor opening. (Figure 6)



Figure 6

CONTACT INFORMATION

**FAB FOURS INC.
2213 INDUSTRIAL PARK ROAD
LANCASTER, SC 29720**

**PHONE: (866) 385-1905
FAX: 866-574-1423
EMAIL: SUPPORT@FABFOURS.COM
WWW.FABFOURS.COM**



**“IF YOU’RE LOOKING FOR MORE OF THE SAME,
THEN YOU’VE COME TO THE WRONG PLACE.”**

- GREG HIGGS

