



Installation Instructions

2004+ Nissan Titan Black Steel/Elite Rear Bumper

Product Number: T1950, U1950

Application: 2004-Current Nissan Titan

DOES NOT FIT 2010+ WITH OEM HITCH

SAFETY

Your safety and the safety of others is very important.

- In order to help you make informed decisions about safety, we have provided installation instructions and other information.
- These instructions alert you to potential hazards that could hurt you or others.
- Please do a job safety analysis (JSA) before each task to identify potential hazards for your situation and remove/protect against them.
- You must use your own good judgment, and take your time.

Read and understand all safety precautions and instructions before installing this product.

THIS PRODUCT IS FOR OFFROAD USE ONLY. ALL LIABILITY FOR INSTALLATION AND USE RESTS WITH THE OWNER.

CARELESS INSTALLATION AND OPERATION CAN RESULT IN SERIOUS INJURY OR EQUIPMENT DAMAGE.

Injury hazard

Failure to observe these instructions could lead to severe injury or death.

- ☐ **Always** remove jewelry and wear eye protection.
- ☐ **Always** use extreme caution when jacking up a vehicle for work. Set emergency brake and use tire blocks. Locate and use the vehicle manufacturers designated lifting points. Use jack stands.
- ☐ **Always** use appropriate and adequate care in lifting components into place.
- ☐ **Always** insure components will remain secure during installation and operation.
- ☐ **Always** wear safety glasses when installing this kit. A drilling operation will cause flying metal chips. Flying chips can cause serious eye injury.
- ☐ **Always** use extreme caution when drilling on a vehicle. Thoroughly inspect the area to be drilled (on both sides of material) prior to drilling, and relocate any objects that may be damaged.
- ☐ **Always** use extreme caution when cutting and trimming during fitting.
- ☐ **Always** tighten all nuts and bolts securely per installation instructions.
- ☐ **Always** route electrical cables carefully. Avoid moving parts, components that become hot and rough or sharp edges.
- ☐ **Always** insulate and protect all exposed wiring and electrical terminals.
- ☐ **Always** perform regular inspections and maintenance on mounts and related hardware.





Installation Instructions

2004+ Nissan Titan Black Steel/Elite Rear Bumper

Product Number: T1950, U1950

Application: 2004-Current Nissan Titan

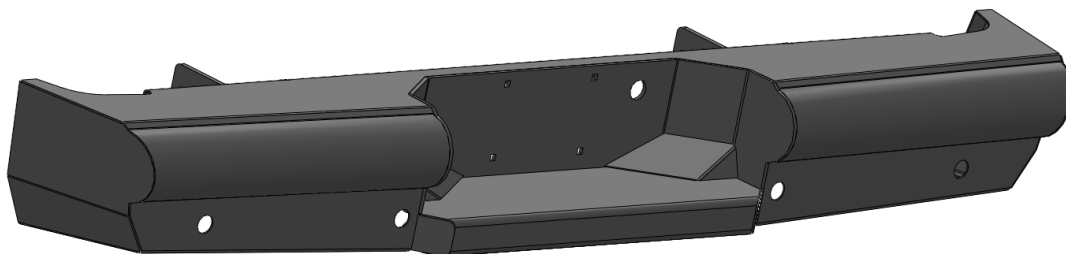
I. Overview

Congratulations on your purchase of the industries' best and most stylish Nissan Titan Rear Bumper! This bumper has been **engineered** for strength while keeping the weight down.

This product has also been **engineered** to allow alignment in three directions plus "castor" so you will end up with a very professional fit.

Your bumper was designed in 3-D from digitized data, CNC laser cut, fabricated, and powder coated... all in the U.S.A.

Enjoy the fit and finish of a quality Nissan Titan Rear Bumper.





Installation Instructions

2004+ Nissan Titan Black Steel/Elite Rear Bumper

Product Number: T1950, U1950

Application: 2004-Current Nissan Titan

II. Tools Required

- Standard and Metric Sockets, Wrench, and Extension
- 12mm ratcheting wrench.
- Phillips Screwdriver
- Floor Jack and wood block.

III. Vehicle Preparation

A. Remove license plate, and unplug the OEM license plate lights. If so equipped, unplug back-up sensors and seal OEM connector with tape; affix to frame.

B. Remove OEM bumper fasteners and OEM bumper. This requires removing the following from each side. Save fasteners.

1. Three 17mm bolts that are threaded into the side of the frame. These will be reused!





Installation Instructions

2004+ Nissan Titan Black Steel/Elite Rear Bumper

Product Number: T1950, U1950

Application: 2004-Current Nissan Titan

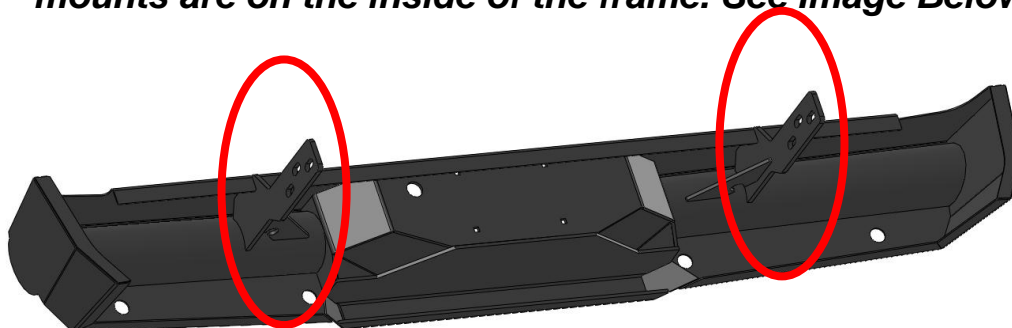
IV. Bumper Installation

NOTE: The Following Installation steps apply to the installation of the Bumper to the vehicle. **PLEASE READ THE ENTIRE MANUAL BEFORE ATTEMPTING INSTALLATION!** Ignoring these steps will increase your probability of scratching the vehicle during product Installation!

A. Remove the Bumper from the shipping carton. Lay all items out on a blanket to prevent damage to the powder coating.

B. Install license plate inserts in 4 provided locations.

C. Install bumper mounts onto bumper as shown using OEM Hardware. Do not tighten fully. Verify that the mounts are on the inside of the frame. See Image Below.



A. Align bumper front to back and snug tighten frame mount fasteners.

B. Align bumper height, verify tailgate clears while lowered, and tighten bumper mounting fasteners.

C. Snap supplied License Plate Light into the bumper and tap into the OEM light harness.

D. Re-install License Plate.





Installation Instructions

2004+ Nissan Titan Black Steel/Elite Rear Bumper

Product Number: T1950, U1950

Application: 2004-Current Nissan Titan

V. Maintenance/Care

- ☐ Periodically check and tighten all fasteners.
- ☐ Stripped, fractured, or bent bolts or nuts need to be replaced.

VI. Contact Information

Fab Fours Inc.
1312 Camp Creek Rd.
Lancaster, SC 29720

Phone (866)-385-1905
Fax (866)-574-1424
Email Support@fabfours.com



More than expected... Better than expected

