



Installation Instructions

JL Limb Risers

Product Number: JL1060
Application: 18+ JL JEEP WRANGLER

SAFETY

Your safety and the safety of others is very important.

- In order to help you make informed decisions about safety, we have provided installation instructions and other information.
- These instructions alert you to potential hazards that could hurt you or others.
- Please do a job safety analysis (JSA) before each task to identify potential hazards for your situation and remove/protect against them.
- You must use your own good judgment, and take your time.

Read and understand all safety precautions and instructions before installing this product.

**THIS PRODUCT IS FOR OFFROAD USE ONLY. ALL LIABILITY FOR
INSTALLATION AND USE RESTS WITH THE OWNER.**

**CARELESS INSTALLATION AND OPERATION CAN RESULT IN SERIOUS INJURY
OR EQUIPMENT DAMAGE.**

**SENSORS FIELD OF VIEW WILL BE ALTERED WITH USE OF THE
REPLACEMENT BUMPER.**

Injury hazard

Failure to observe these instructions could lead to severe injury or death.

- Always** remove jewelry and wear eye protection.
- Always** use extreme caution when jacking up a vehicle for work. Set emergency brake and use tire blocks. Locate and use the vehicle manufacturers designated lifting points. Use jack stands.
- Always** use appropriate and adequate care in lifting components into place.
- Always** insure components will remain secure during installation and operation.
- Always** wear safety glasses when installing this kit. A drilling operation will cause flying metal chips. Flying chips can cause serious eye injury.
- Always** use extreme caution when drilling on a vehicle. Thoroughly inspect the area to be drilled (on both sides of material) prior to drilling, and relocate any objects that may be damaged.
- Always** use extreme caution when cutting and trimming during fitting.
- Always** tighten all nuts and bolts securely per installation instructions.
- Always** route electrical cables carefully. Avoid moving parts, components that become hot and rough or sharp edges.
- Always** insulate and protect all exposed wiring and electrical terminals.
- Always** perform regular inspections and maintenance on mounts and related hardware.



Installation Instructions

JL Limb Risers

Product Number: JL1060
Application: 18+ JL JEEP WRANGLER

I. Overview

Congratulations on your purchase of the industries' best and most stylish limb risers! These limb risers have been **engineered** for strength while keeping the weight down.

Your limb risers have been designed in 3-D, fabricated, and powder coated... all in the U.S.A.

Enjoy the fit and finish of a quality set of limb risers from Fab Fours Inc!





Installation Instructions

JL Limb Risers

Product Number: JL1060

Application: 18+ JL JEEP WRANGLER

Upper Mount Install (with Fab Fours Vi-Cowl)

1. Locate the two mounting holes on the top side of your Fab Fours Vi-Cowl.
2. Using supplied hardware install upper mount on to your Vi-Cowl as shown below.



Lower Mount install

1. Start by open hood of vehicle.
2. With hood propped up, using a 10mm socket remove the two nuts located on inside of hood latch. See image below.



Remove using
10mm socket.



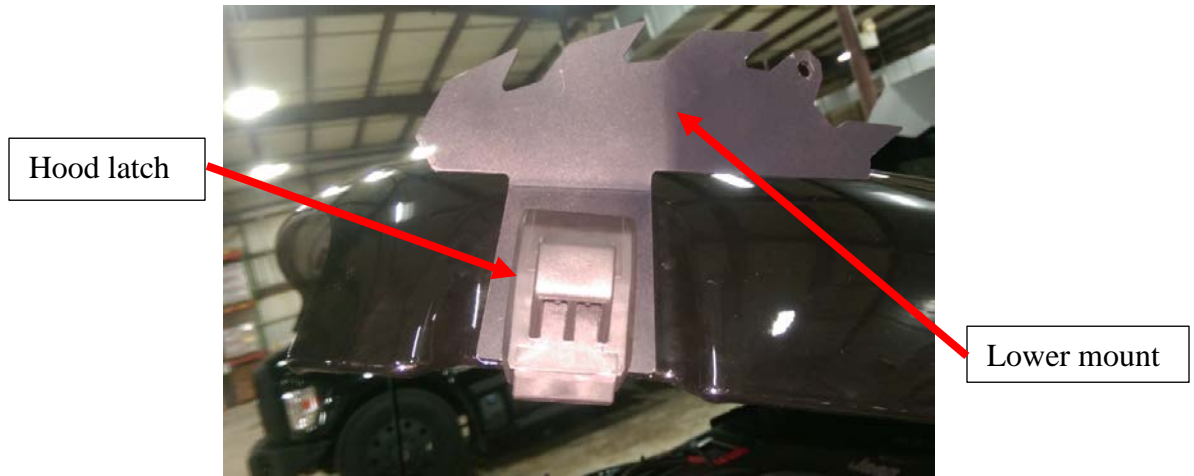
Installation Instructions

JL Limb Risers

Product Number: JL1060

Application: 18+ JL JEEP WRANGLER

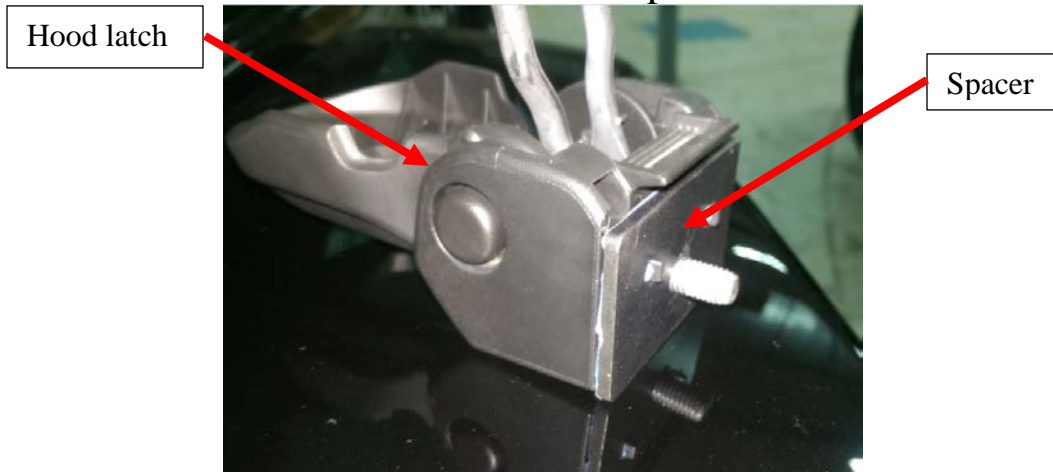
3. Next remove hood latch and slide lower mount behind hood latch as shown below.



4. Next place lower mount and hood latch back on hood and tighten all hardware.

****Note: Lower hood bracket should be installed with the bend on the mohawk inwards towards the center of the vehicle.**

5. Then remove the latch section of the hood latch and install the included spacer as shown.



6. Reinstall hood latch with spacer.
7. Repeat steps 1-6 on the passenger side.



Installation Instructions

JL Limb Risers

Product Number: JL1060

Application: 18+ JL JEEP WRANGLER

Installing Limb Riser Cable

1. Start by sliding cable end over mount and lining up holes. With holes lined up put pin through both cable end and mount as shown below.



2. Repeat step one to install the other end of the cable at the Vicowl bracket.
3. Adjust turnbuckle to remove all slack from the cable.
4. Repeat steps 1-3 on the passenger side.



Installation Instructions

JL Limb Risers

Product Number: JL1060
Application: 18+ JL JEEP WRANGLER

II. Maintenance/Care

- Periodically check and tighten all fasteners.
- Stripped, fractured, or bent bolts or nuts need to be replaced.
- Keep all surfaces free of dirt, road grime, and standing water to ensure finish longevity.

III. Contact Information

Fab Fours Inc.
2213 Industrial Park Rd.
Lancaster, SC 29720

Phone (866)-385-1905
Fax (866)-574-1424
Email Support@fabfours.com



More than expected... Better than expected